

SPECIFICATION FOR APPROVAL

Customer:		
Customer P/N:	Customer Rev.: 00	
Customer Model No.:	Customer ID:	
Model No.: CIC-G240LF-RP	Rev.: 00	
Article: RJ45 10/100BASE 2X1 no LED with integrated magnetics		
Standard: Normal	Safety No.:	
Catalog No.:	Date: 9.02.2010	
Prepared by	Checked by	Approved by

Please evaluate the samples, sign this approval sheet and return to us.

- Approved
- Rejected
- Conditional Approved

Comments:

Customer Approved by : _____

Signature & Date

Deviation and History

Please note items listed below does not meet your specifications and requires your consent for deviation:

Item	Customer specification	Suggestion specification

Remarks:

△8				
△7				
△6				
△5				
△4				
△3				
△2				
△1	01			
--	00	Initial Issue	Danny	9.02.2010
Item	Rev	Description	Sign	Date

History

Customer P/N:	Model No.: CIC-G240LF-RP
---------------	--------------------------

Schematic/Mechanical Characteristics

1. SCOPE

1.1 Content

1.1.1 This specification covers performance, tests and quality requirements for :
SINGLE PORT RJ45, TAB DOWN, FILTERED.

2. REQUIREMENTS

2.1 Design and Construction

2.1.1 Product shall be of design, construction and physical dimensions specified on applicable product drawing.

2.2 Materials and Finish

2.2.1 Contact :

2.2.1.1 RJ Contact : Phosphor Bronze, Thickness=0.35mm

Finish : (a) Contact Area : 6μ " min. Gold

(b) Solder tail Area : 60μ " min. Tin

(c) Underplating : 50μ " min. Nickel over all

2.2.1.2 Joint Contact : Brass, Thickness=0.35mm

Finish : 60μ " min. Tin

2.2.2 Plastic Part :

2.2.2.1 Housing : Thermoplastic, PBT, Black

2.2.2.2 Insert : Thermoplastic, PBT, Black

2.2.3 Shell

2.2.3.1 Shell : Copper Alloy- H65Y Cu/Ep.Ni , Thickness=0.20mm

2.2.3.2 Shell Plated: Copper Alloy with Ni Plated.

2.3 LED Lamp or NON LED Lamp

2.3.1 Lens Color : Transparent with color

2.3.2 Emitted Color : Green

2.3.3 Wave Length : Green 573nm

3. Operating and Storage Temperature

3.1 Operating Temperature : 0°C TO $+70^{\circ}\text{C}$

3.2 Non-Operating Temperature : -40°C TO $+85^{\circ}\text{C}$

4 .Ratings

4.1 Voltage rating : 125 VAC

4.2 Current rating : 1.5 A

5. Packaging and Packing

All parts shall be packaged and packed to protect against physical damage, corrosion and deterioration during shipment and storage.

7. Profile of Wave Solder

7.1 SUGGESTED WAVE SOLDER CURVE

(1) Tip temperature: $250 \pm 10^{\circ}\text{C}$

(2) Tip temperature time: 5 sec max

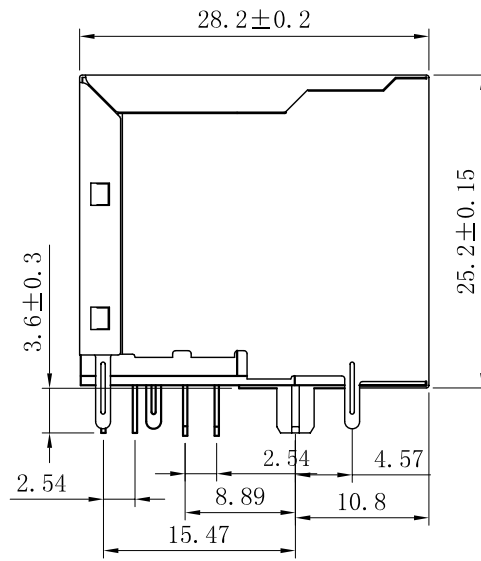
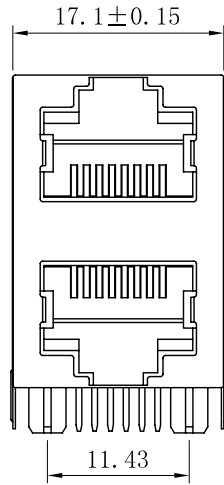
* The melting point of Tin: 183°C

Customer P/N:

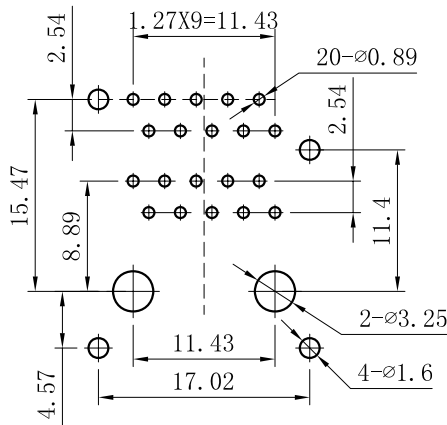
Model No.:

CIC-G240LF-RP

Schematic/Electrical Characteristics



PC Board Layout




NOTES:


1、 Electrical

Current Rating: 1.5 MPS
 Voltage Rating: 125V AC
 Insulation Resistance: $\geq 1000M\Omega$
 Withstanding Voltage: AC 1000V RMS
 50Hz or 60Hz 1 Min

Contact Resistance: $\leq 30M\Omega$

Plastic Point Type:

Type: A: Gross Point 

B: Round Point 

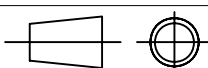
2、 Mechanical

Mating Force: 5-25N
 Retention Strength: $\geq 76N$
 Durability: ≥ 750 TIMES

3、 Material

Housing: PA6T or PBT filled with Fiberglass
 Insert: PBT filled with Fiberglass
 Shielding: 0.2mm Thickness Copper alloy with Tin Plated
 Contact: Phosphor Bronze, Gold Plated over Nickel
 Gold Plating: $< 3\mu$ "inch, 3μ "inch, 6μ "inch, 15μ "inch,
 30μ "inch, 50μ "inch

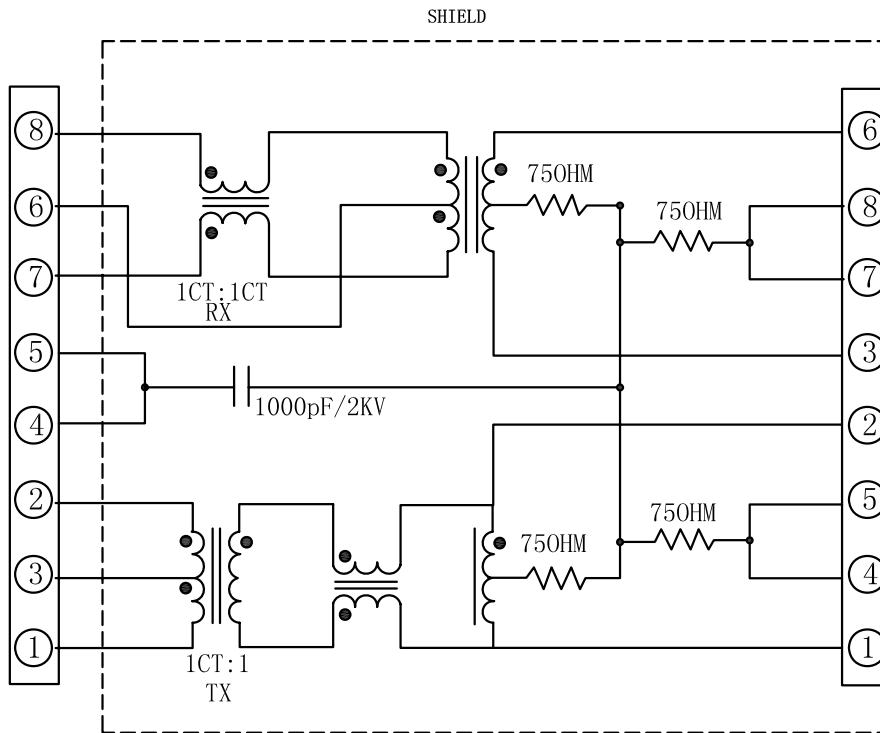
4、 Working Temperature: -40°C ~ +70°C

			SCALE:	TOLERANCE ± 0.1 ISO 1302	
Designed	Cozmuta D				[mm]
Checked	Cozmuta D				ISO 5457
Aproved	ConticoTech.		Date: 9.02.2010	TITLE: RJ45 10/100BASE 2X1 no LED with integrated magnetics Y/G	
Contico Technologies				PART NO: CIC-G240LF-RP	

Customer P/N:

Model No.: CIC-G240LF-RP

Specification Material list



Viewed from PCB Component side

ELECTRICAL SPECIFICATIONS @ 25°C unless otherwise noted:

Insertion Loss: 1-100MHZ -1.0dB MAX
 Return Loss: 1-30MHZ -18.0dB MIN
 30-60MHZ -16.0dB MIN
 60-80MHZ -12.0dB MIN

Cross Talk: 1-30MHZ -40.0dB MIN
 30-60MHZ -35.0dB MIN
 60-100MHZ -30.0dB MIN

CMR: 1-100MHZ -35.0dB MIN

Hipot:1500V AC 6S 1mA

OCL:350uH MIN @ 100KHZ 100mV 8mA DC

Customer P/N:

Model No.:

CIC-G240LF-RP